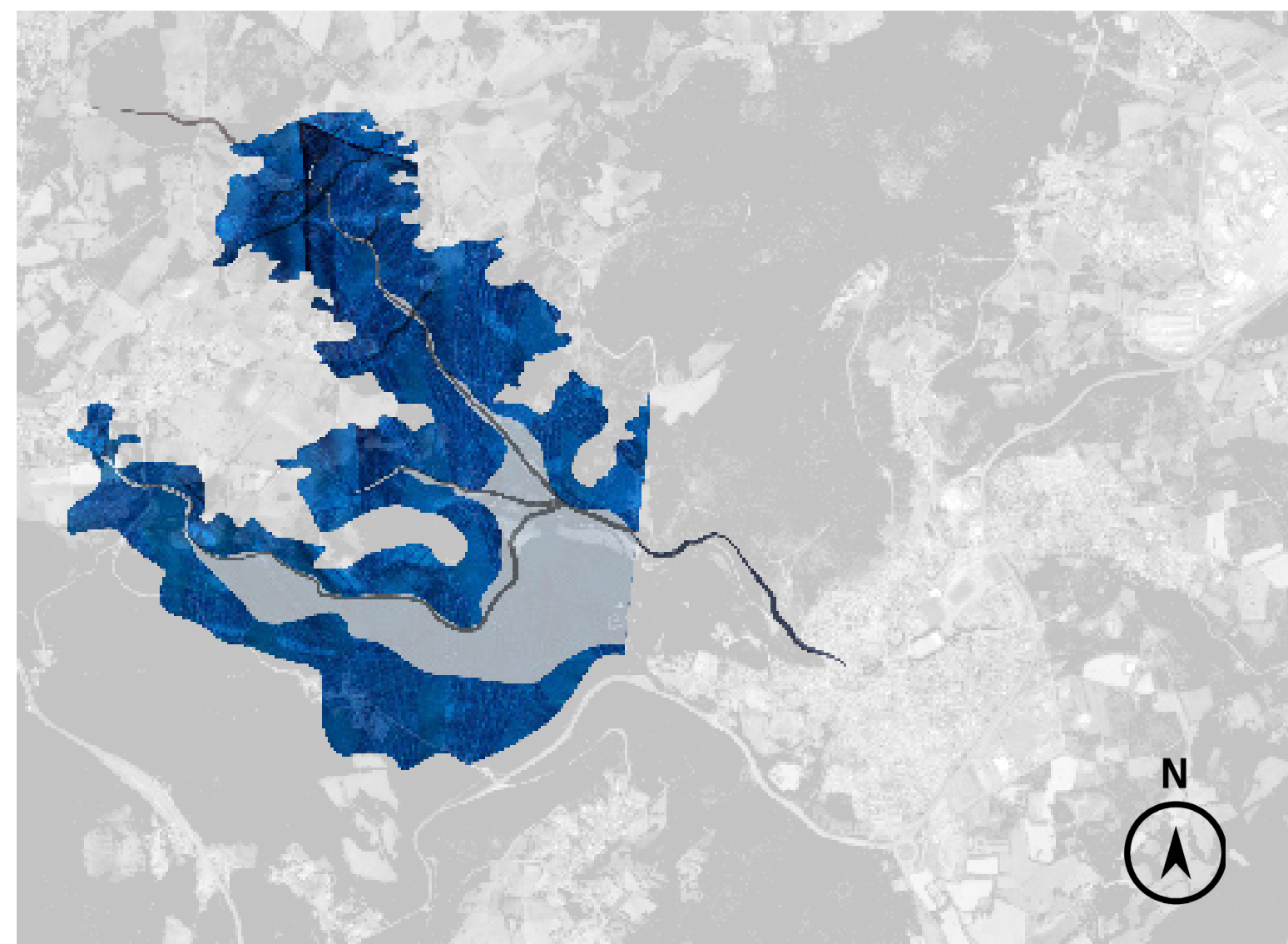


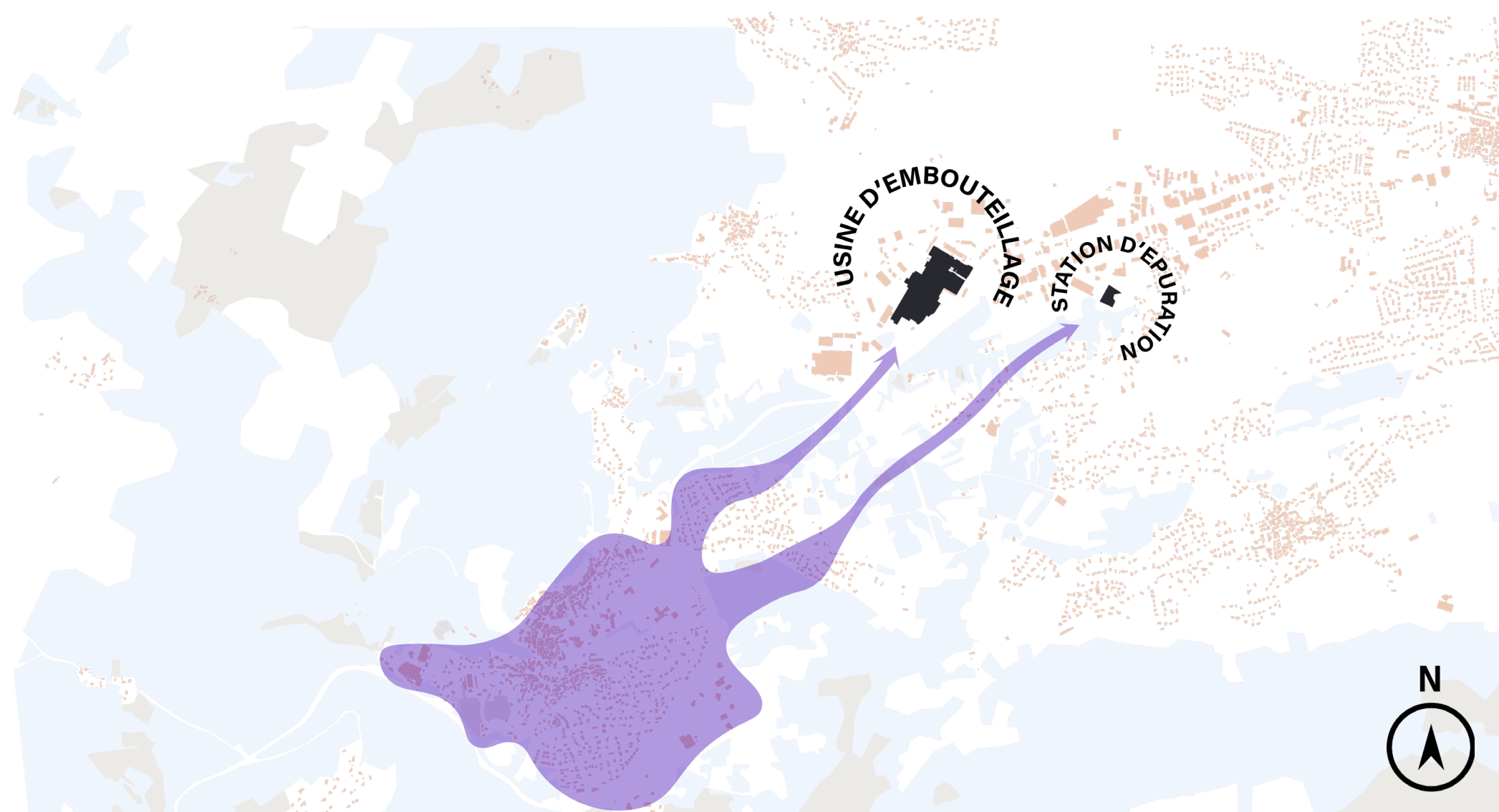
L'eau vive

Diagnostic

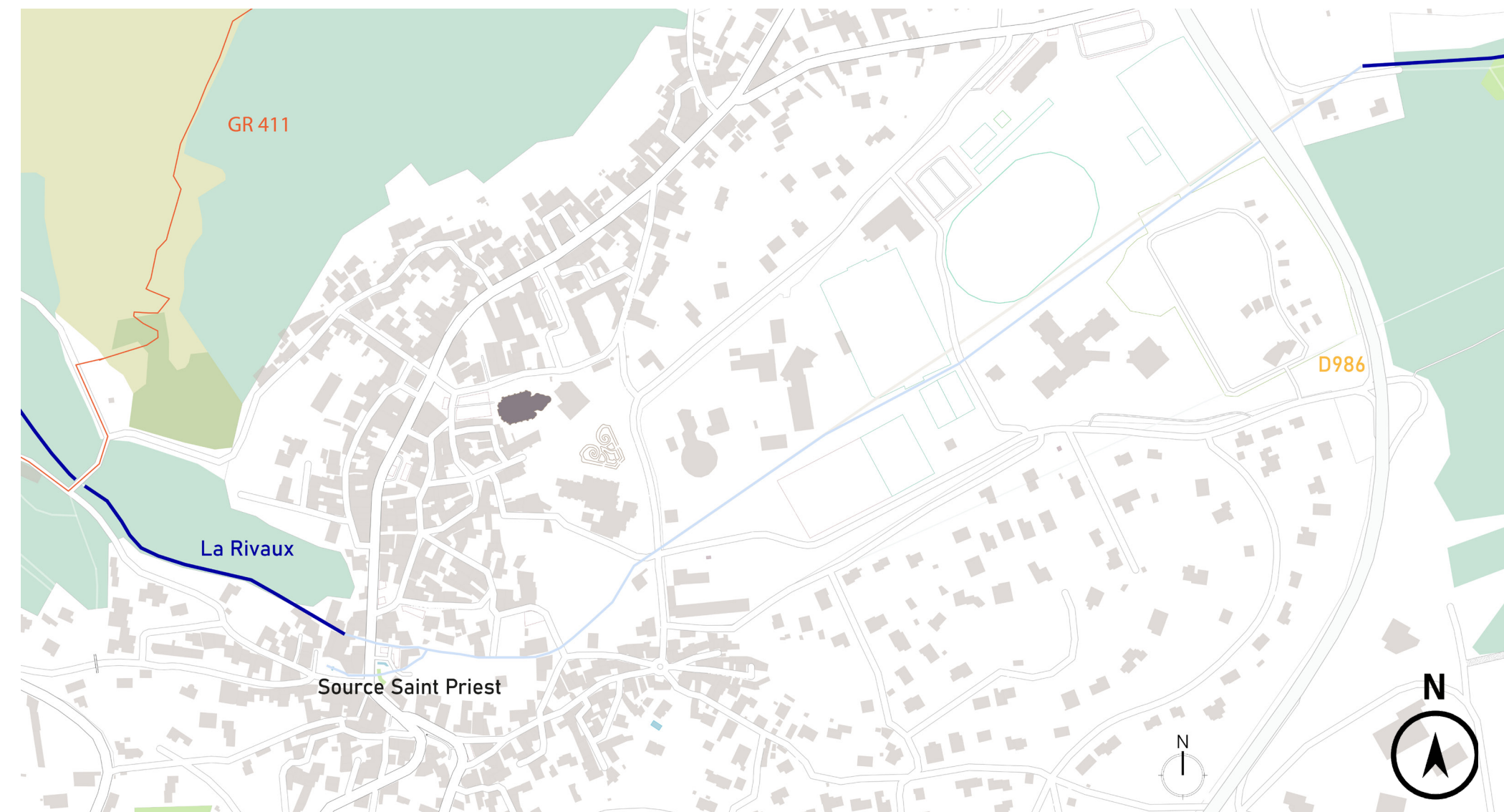
Bassins versants de Volvic



Externalisation de la gestion de l'eau



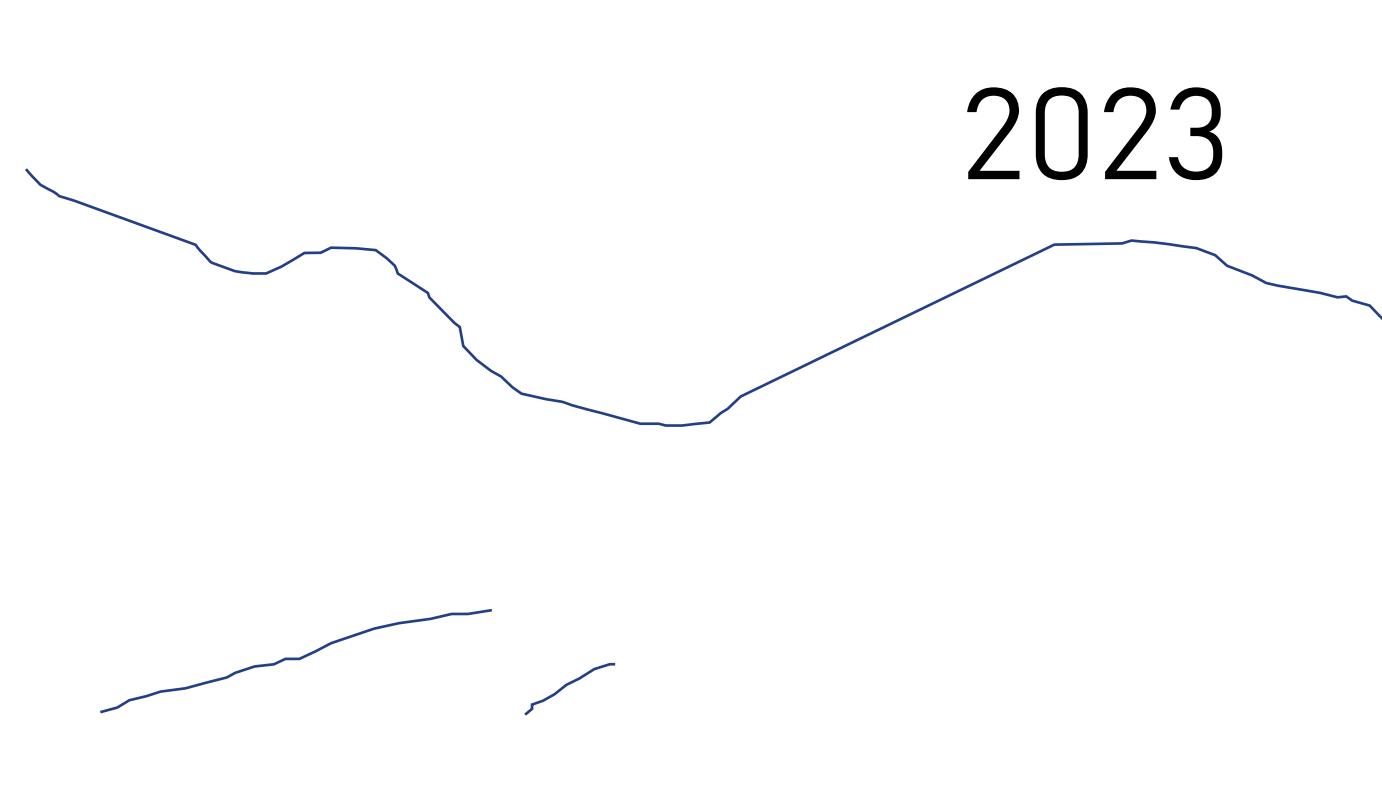
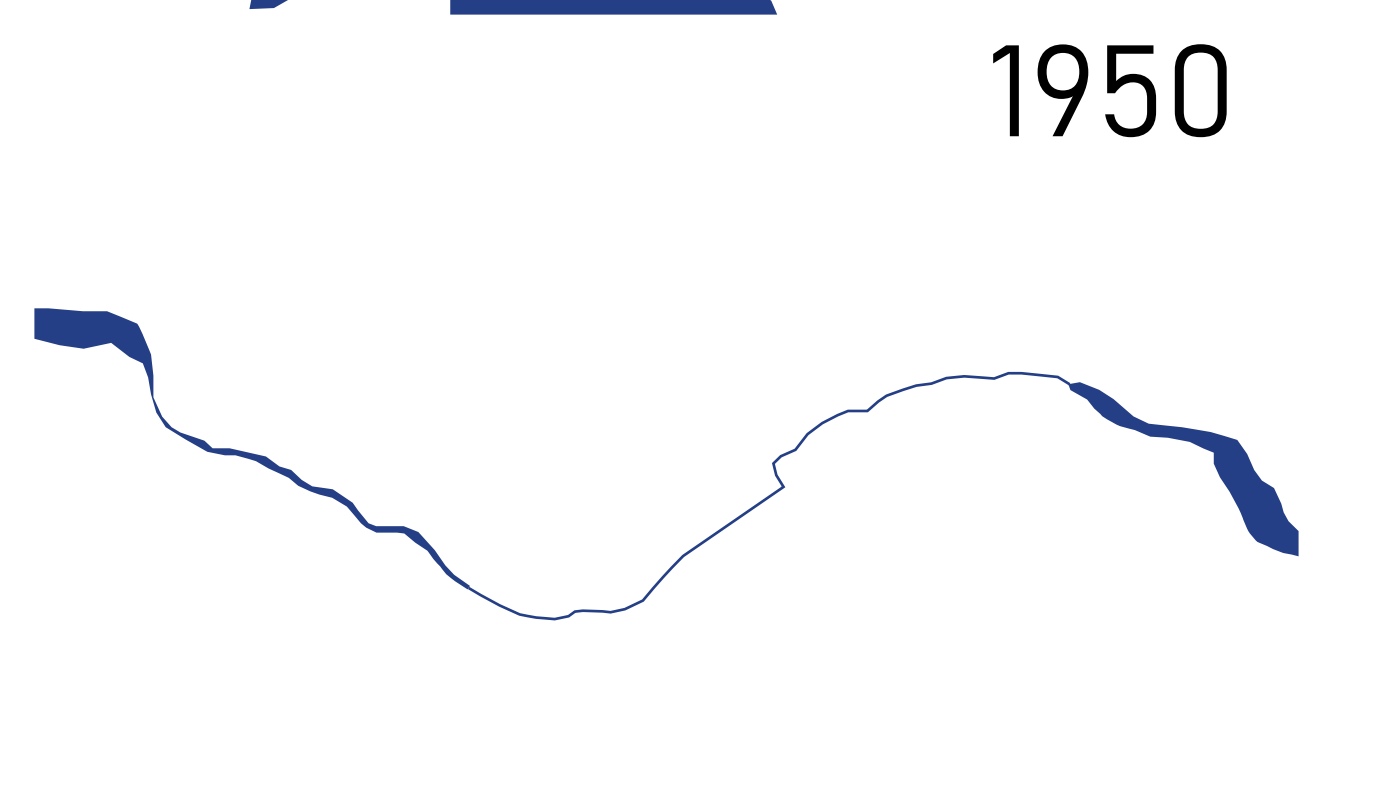
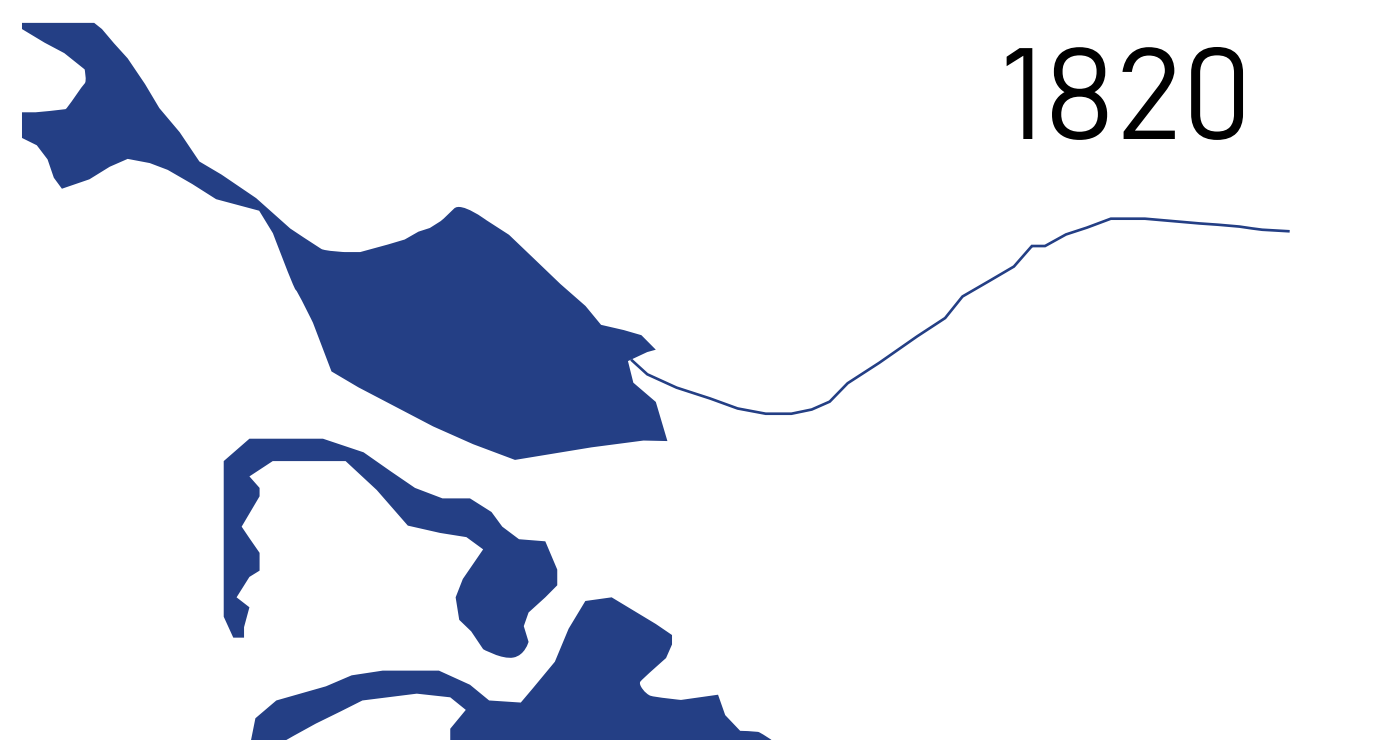
Busage de l'eau, La Rivaux, Saint Priest



Remonter l'urbanisation



Raréfaction des cours d'eau

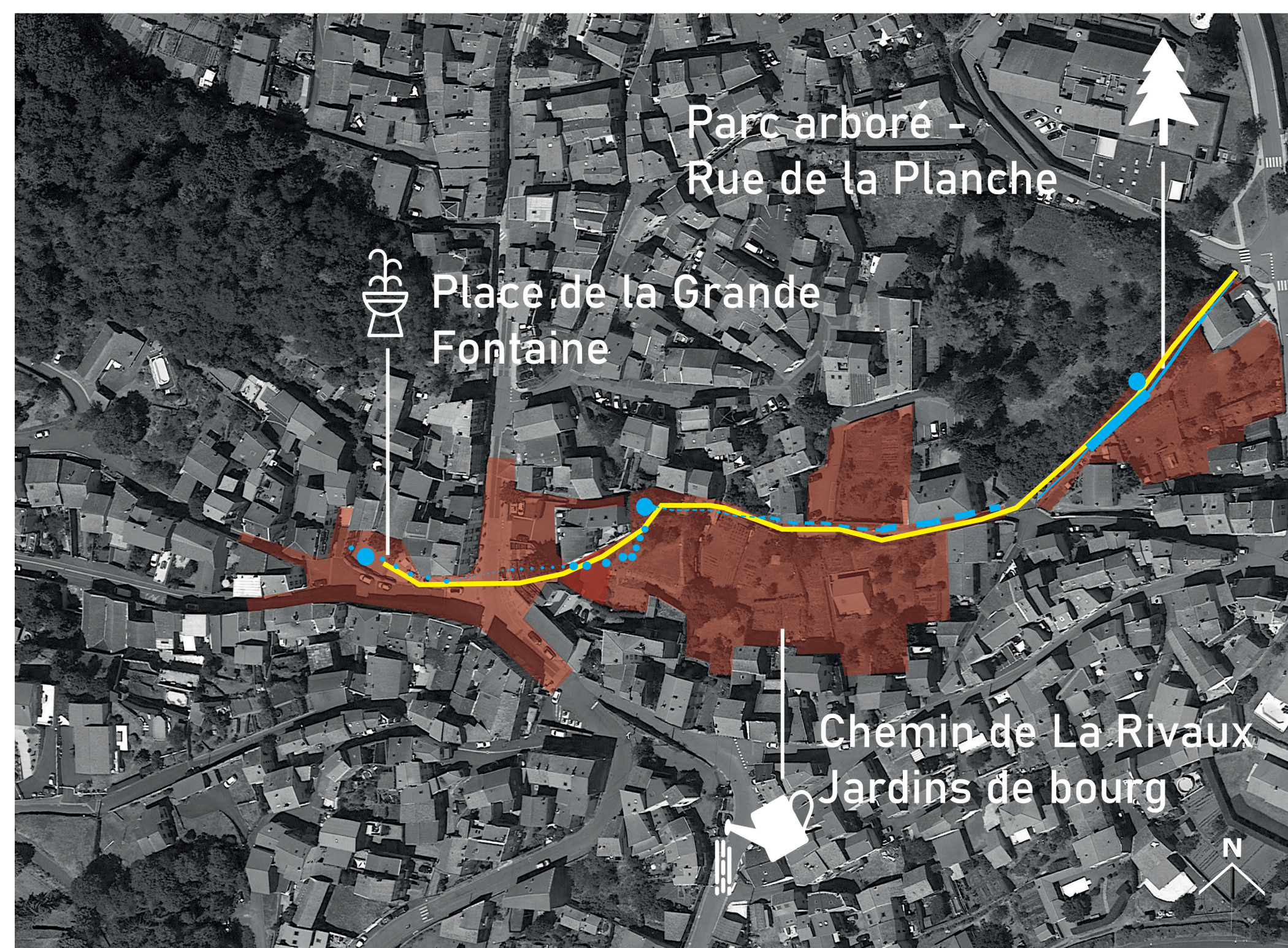


Les anciens usages de l'eau



1927,
470 litres
seconde
2021,
50 litres
seconde

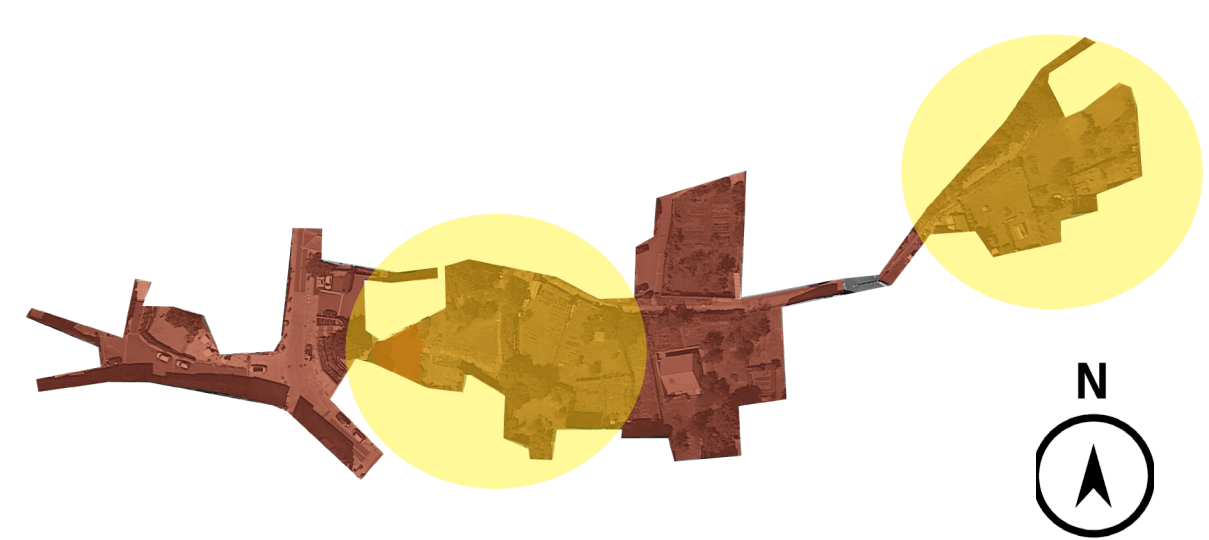
Chemin de promenade
Points de rencontre de l'eau
Variations de l'eau



Périmètres d'interventions

Projet

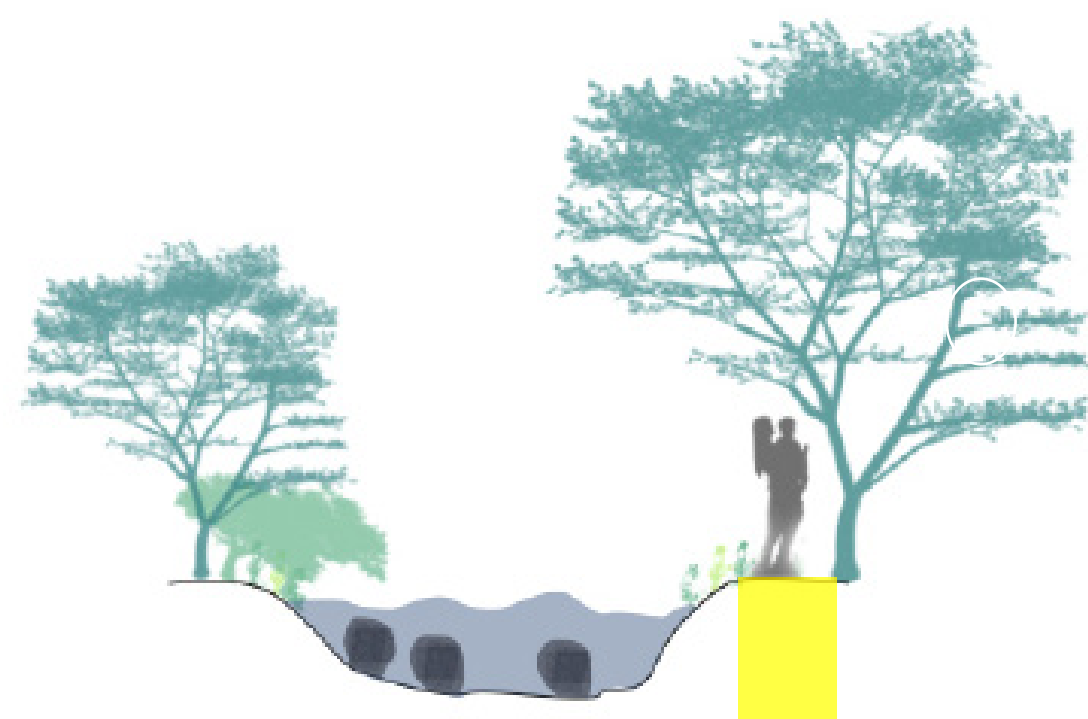
L'EAU VIVE EN VILLE



La rivière à découvert



Sur le chemin des ruisseaux



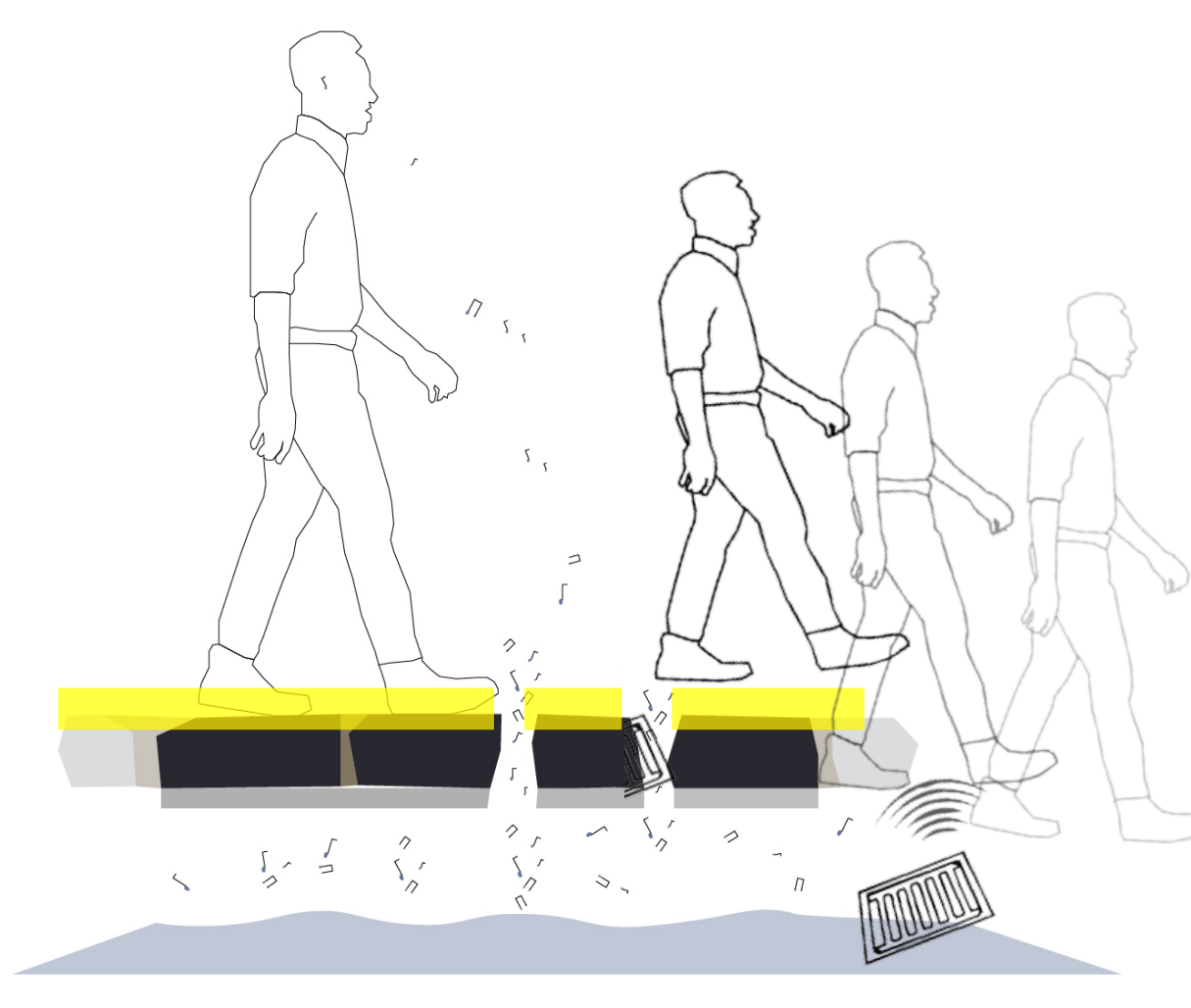
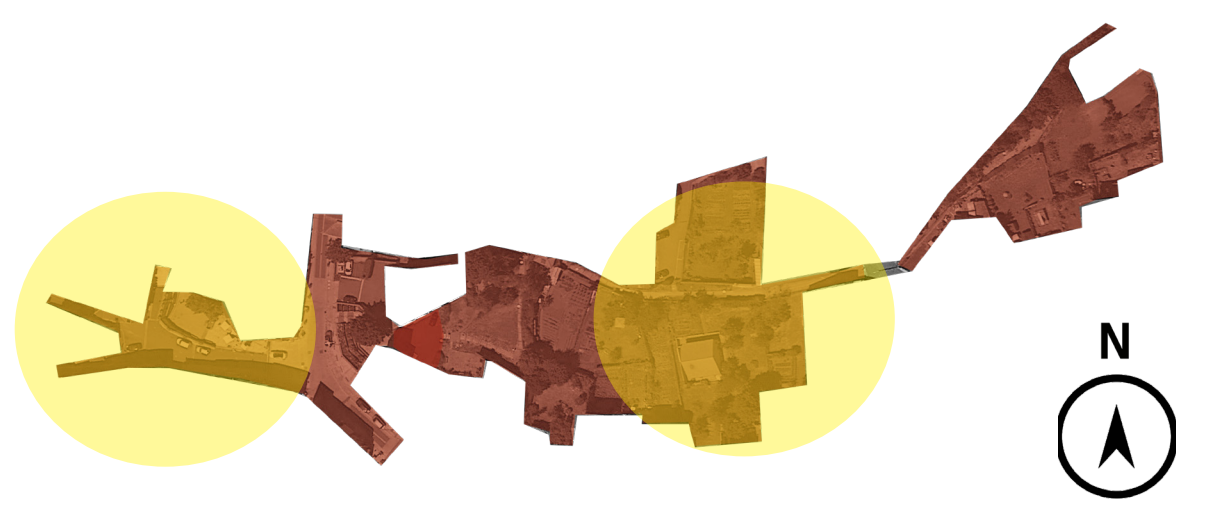
Le moulin de la confluence



Au fil des toits

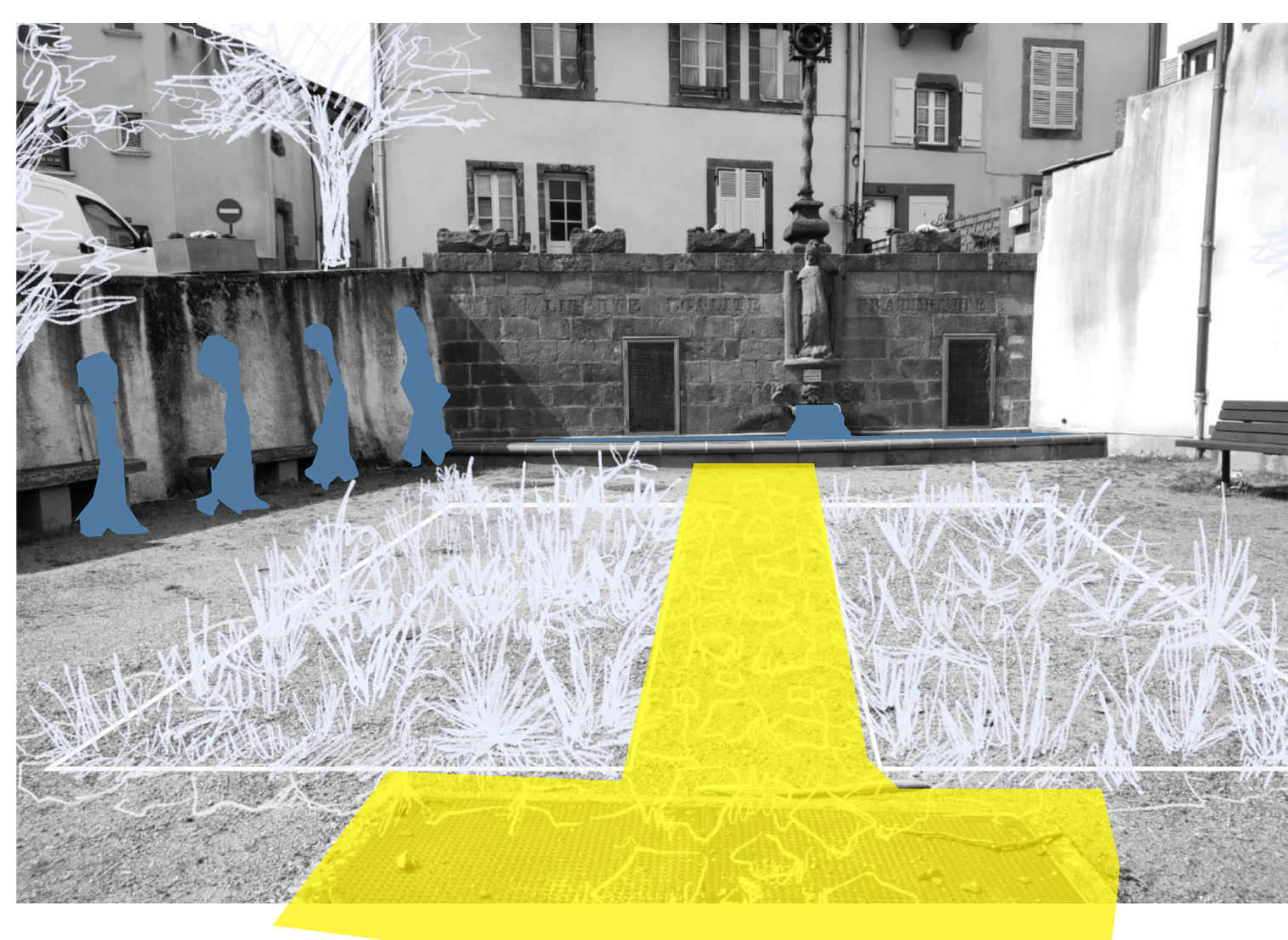


LE RUISSEAU CHANTEUR

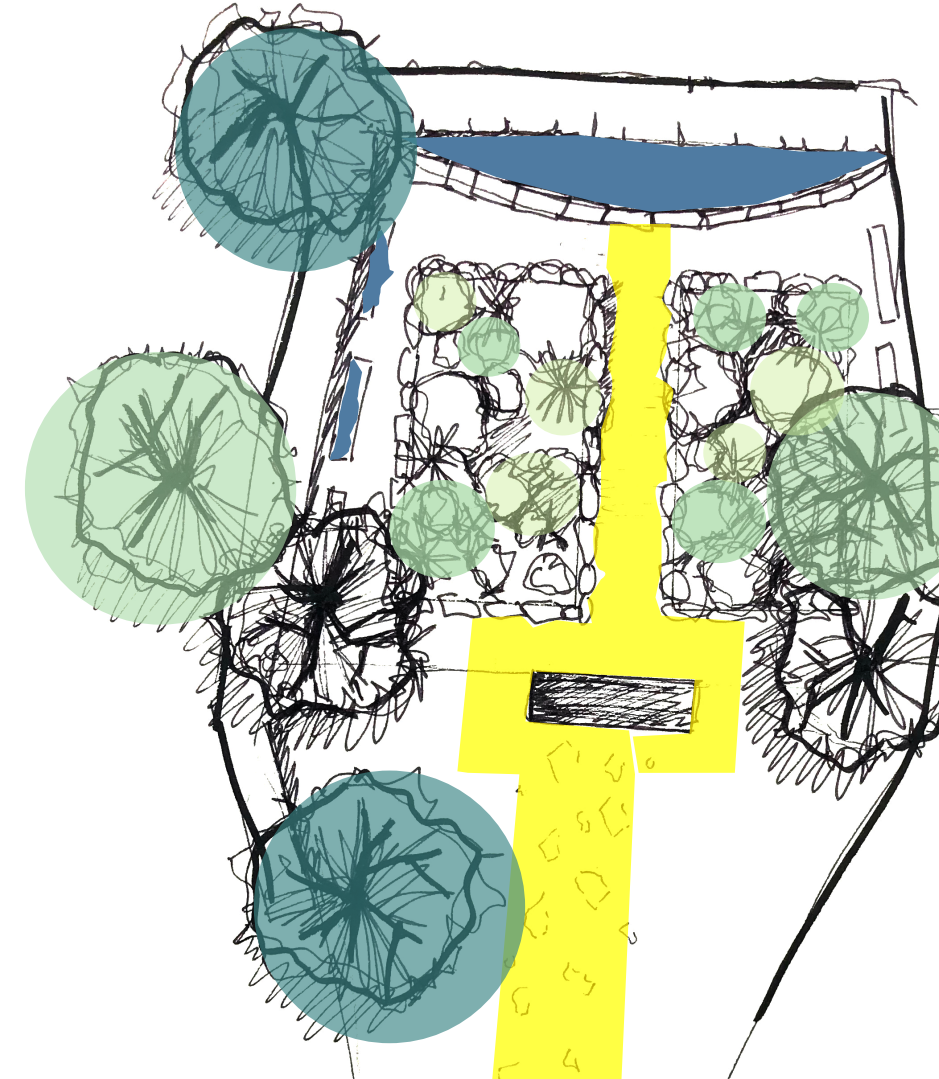


ÉPISODE DE RUISSELLEMENT INTEMPESTIF

La renaissance



Le lavoir végétal



De l'eau pour la place

